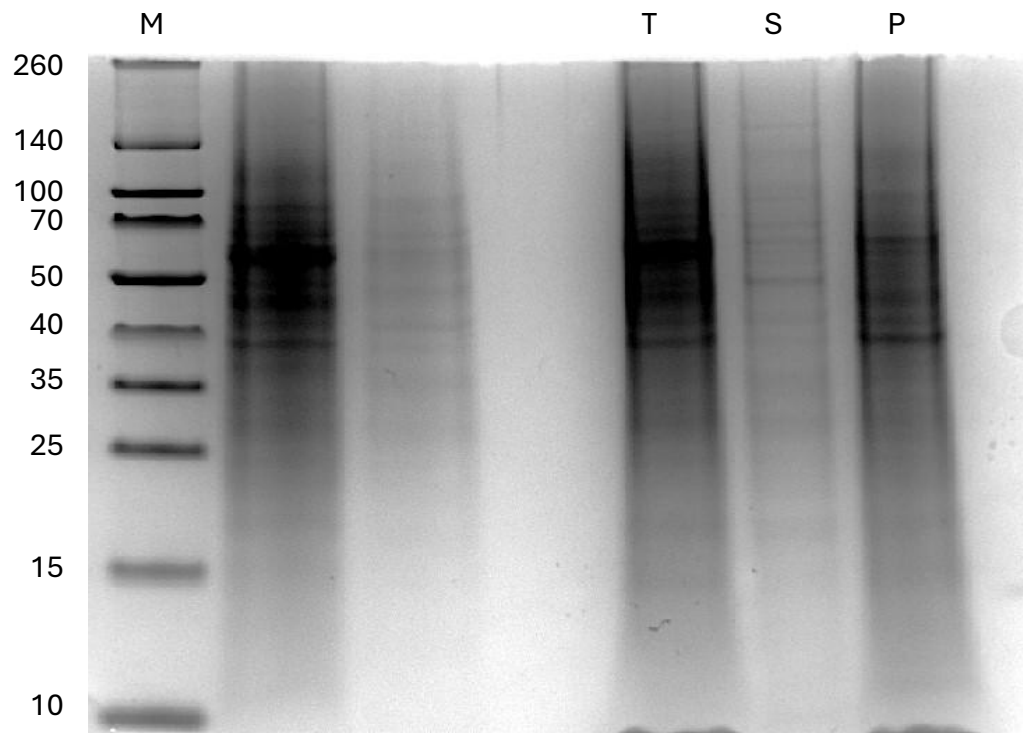


Fig. S1: (a) Coomassie Blue–stained 12% SDS–polyacrylamide gel showing total, soluble, and plasma membrane–associated protein fractions extracted from *Ammonia* spp. Protein extraction was performed from 200 individuals using 200 μ L of extraction buffer per sample. (b) Western blot probed with anti-Annexin-13 antibody using the same fractions, revealing a band at \sim 36 kDa in total and membrane-associated protein fractions. M, standard molecular weight markers (SMW); T, total proteins; S, soluble proteins; P, plasma membrane–associated proteins.

a



b

